

Welcome to the latest edition of the Camdata Newsletter, which has now been published for over a decade.

For the last 20 years, our core business has always been developing and manufacturing computer equipment for difficult and unusual environments, from food factories to ocean vessels and power stations to reconnaissance aircraft.

The Camdata range is fixed and mains powered and the Microscribe range is handheld and battery powered.

Our commitment to RFID is increasing with the launch of a separate website; [www.rfidcam.com](http://www.rfidcam.com) with the PDC range of wristbands and the various RFID products from Two Technologies. We will be adding other products during this year.



Peter Cowley  
Managing Director

### Different Types of RFID

Three primary frequency bands are being used for RFID:

**Low Frequency (125/134KHz)** – Most commonly used for access control, animal tracking and asset tracking.

**High Frequency (13.56 MHz)** – Used where medium data rate and read ranges up to about 1.5 meters are acceptable. This frequency also has the advantage of not being susceptible to interference from the presence of water or metals.

**Ultra High Frequency (850 MHz to 950 MHz)** – offer the longest read ranges of up to approximately 3 meters and high reading speeds and are used in the retail sector.

## New Products from Two Technologies

### JETT•eye

The brand new JETT•eye is the industry's first fully featured, rugged and customisable hand held computer integrated with a colour camera, bar code imager, and wireless connectivity.

The device allows the user to take digital colour photos, capture data, and connect with the office, while its IP65 rating means it is equipped to survive even the toughest environments.

Alongside integrated Bluetooth and WLAN 802.11b, a 4 megapixel camera, and a bar code imager, the product has a 320x240 pixel QVGA-TFT colour touch screen.

The JETT•eye is also fully customisable, offering the option of application-specific keyboards, or company colours and logos.



### JETT•XL

The JETT•XL is an enhanced version of the JETT•CE product, featuring a 624MHz processor, and Microsoft Windows CE .NET 5.0 operating system. The product comes standard with both 802.11b and Bluetooth, as well as being IP65 certified.

### JETT•RFID+

The JETT•RFID+ features an integrated 13.56 MHz RFID transponder reader/writer which interfaces with a wide range of industry standard tags and smart labels. These include ISO 14443A, ISO 14443B, and ISO 15693 tags from all major manufacturers.

A first for the JETT•RFID+ is the future-proof Software Defined Radio (SDR) architecture. SDR allows for new protocols and tags to be supported by existing hardware as they become available through simple field upgrades.



JETT•eye showing the camera, bar code imager and LED flashlight



## Camdata offers RFID Wristbands

Camdata has been appointed distributor of the PDC range of RFID wristbands.

In the five years that they have been available, the wristbands Camdata now offers have become the identity tag solution of the world's top venues, including the Super Bowl, Olympics, Wimbledon, Tour de France, and major amusement and water parks.



Combining a microchip and antenna sealed in a waterproof pocket, the Smart Band® RFID wristband system provides wireless communication to:



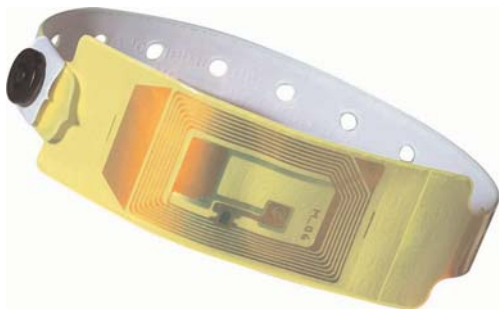
\*Increase per cap spending in Food & Beverage and Retail.

\*Reduce shrinkage (cash drawer discrepancies).

\*Allow for breakage (non-refunded cash left on wristband).

\*Provide custom imprinted advertising revenue opportunities.

\*Offers photo & locker revenue sharing programs.



## WEEE & RoHS Directives

The Waste Electrical and Electronic Equipment Directive (WEEE) and the Restriction of Hazardous Substances (ROHS) Directives set collection, recycling and recovery targets for all types of electrical products.

The Directive on Restriction on the Use of Certain Hazardous Substances in Electrical and Electronic Equipment Directive (ROHS) aims to harmonise legislation controlling the use of hazardous substances in EEE across the EU and also seeks to reduce the environmental impact of WEEE by restricting the use of certain hazardous substances during manufacture.

Camdata Ltd is happy to provide information on local organisations that can reprocess products. Alternatively, all products that have reached 'end of use' can be returned to Camdata and will be reprocessed free of charge.



Camdata Ltd  
 PO Box 738  
 Harston  
 Cambridge  
 CB2 5WY

Tel: 0845 064 5555  
 Int: +44 208 33 88 333  
 Fax: +44 (0) 1223 873337  
 E-mail: [info@camdata.co.uk](mailto:info@camdata.co.uk)

[www.camdata.co.uk](http://www.camdata.co.uk)  
[www.microscribe.co.uk](http://www.microscribe.co.uk)

Copyright © 1984-2006 Camdata Ltd