

Thank you for reading the tenth edition of the Camdata Newsletter. This has a new image following my buying out the shares of my partner, Richard Kaval, MD of Artronics, which remains our most important supplier. Camdata is now run with the assistance of Alison Lloyd as non-executive Finance Director. During 2001, the foot and mouth outbreak affected Camdata's rugged PC business and thus, we concentrated more on other products and market sectors. Nevertheless we have undertaken a wide range of projects for new and existing customers.

I look forward to your call or email (peter@camdata.co.uk) if we can be of help with any standard or custom product.



P L Cowley  
Managing Director

PS Camdata is exhibiting with Microscribe on stand **4307** at the Computers In Manufacturing show at the NEC (12 to 14 November 2002).

## Recent projects

- **British Airport Authorities for rack-mount terminals**
- **Power supply manufacturer for PCB design and prototypes**
- **The Snack Factory for rugged PC rental**
- **PTFE parts manufacturer for measuring gauge multiplexers**
- **Fabricom for stainless steel terminals**
- **VAR for hotel terminals**

## Camdata/T31 Legacy VT terminal



The Camdata/T31 has been designed for those industrial situations where a computer terminal is being used and needs to be enhanced or replaced without resorting to the cost and potential unreliability of a Windows platform PC. Camdata has been designing and building rugged terminals for over 15 years. The T31 is a DEC VT100 compatible terminal available with a variety of screens, keyboards and packaging forms. The unit above is 4U rack-mount with a full 80 character by 25 line display and 28-key pad. BAA has taken a number of these units for use in a system controlling the landing lights at Heathrow.

The specification options include:

- displays from 80 character by 25 lines down to 20 characters by one line. LCD,VFD,EL or CRT
- 16 and 28 way keypads, or full ABCDEF or QWERTY keyboards
- powered from 110/240V AC or 12/24/48V DC. Battery option
- rack-mount, panel-mount, stand-alone
- IP65 or IP54, completely or from front
- DEC VT100 compatibility. Other emulations possible
- magnetic card or barcode input
- printer output, weigh scale input
- RS232, RS422, multi-drop RS485, 20mA current loop
- protected against temperature (over 60C and under 0C), shock, vibration, magnetic fields, corrosive or dangerous atmospheres
- embedded PC option



The above illustrates both a new and a badly fire-damaged but still fully functional T31.

Another version is the stainless steel T31, used in food factories and abattoirs. The unit illustrated has a 40 character by 16 line LCD, full QWERTY keyboard and is in an IP65 stainless steel case.

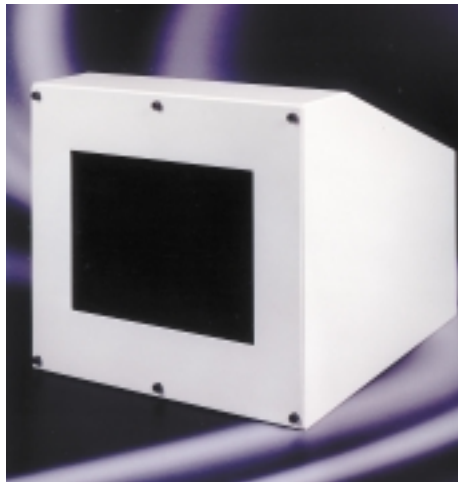
# Touch screen products

Camdata has used touch screen interfaces on its products and within custom projects for over ten years. Examples of some of these are:

**The Terrapin**, stainless steel rugged PC, with a 12" or 15" TFT display, a Pentium/Celeron processor, three or seven serial interfaces, 10/100 Ethernet interface, protected to IP65.



A custom project for the UK Prison service, incorporated a 17" color CRT with Surface Acoustic Wave (SAW) touch screen in a heavy-duty steel water-protected enclosure with toughened glass. Used by prisoners to arrange visitor times and order goods from the prison shop.



**The Camdata/42FT**, designed for the Lloyds Insurance market, provides a touch screen DEC-compatible terminal on a space saving arm..

## Specialised networking

Camdata has been involved in standard and custom low-speed networking for many years, usually based on a two-wire RS485 protocol and used in the following situations:

- Argos for inter-connecting the docket printers and customer stock checking terminals to the till network
- IKEA, Matalan and other retailers for till security networking
- pubs and restaurants around the country for hospitality systems
- laboratory instrumentation
- weighing systems

## Customisation

One of Camdata's main strengths is to take standard hardware and software sub-systems and adapt them to a customer's requirements. Our library contains over one hundred and fifty hardware and software modules.

We can then provide a low cost prototype and a very short production engineering cycle. We have manufactured over 15,000 products over the last fifteen years.

### The sub-systems include:

- RS485 network protocols
- many LCD, VFD and CRT display drivers
- dust and water protected keyboard layouts
- keyboard membranes
- metal packaging solutions
- terminal emulations

### The skills include:

- firmware and software design
- digital and analogue hardware design
- PCB layouts
- enclosure design
- project management

**CAMDATA**  
LIMITED

Camdata House  
29 Recreation Ground Road  
Stamford, PE9 1EW

Tel: +44 (0) 1780 480555  
Fax: +44 (0) 1780 480666  
e-mail: sales@camdata.co.uk  
url: www.camdata.co.uk

Copyright © 2002 Camdata Ltd.